

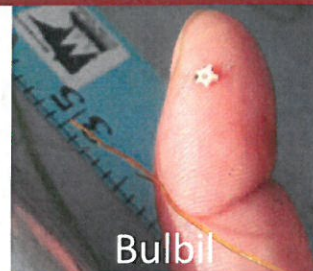
### Starry stonewort keys to ID:

- Grass-like appearance
- Smooth, thin stems
- Branchlets in whorls of 5-8
- Forked tips of branchlets are asymmetrical
- Star-shaped bulbils may be observed
- Small, orange spheres (antheridia) may be present

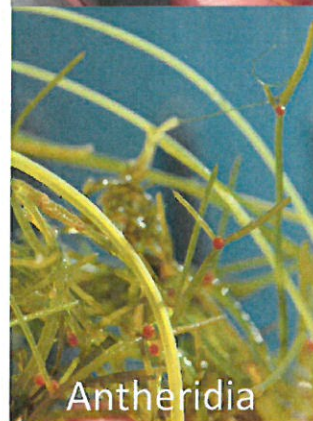
Starry stonewort photos © Paul Skawinski, Nicole Kovar, Dave Hansen, Minnesota DNR, Larkin Lab



Stem and branchlets



Bulbil



Antheridia



### Native lookalikes:

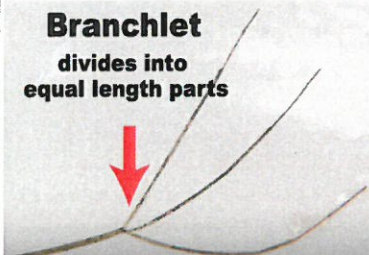
#### *Chara* (muskgrass)



- Rough stems
- Musky odor
- Branchlets not forked at tips

#### *Nitella* (stonewort)

**Branchlet**  
divides into  
equal length parts



- Branchlets symmetrically forked
- Appears limp out of water

#### Sago pondweed



- Leaves branch profusely
- Clusters of egg-shaped fruit may be present

#### Water stargrass



- Alternate leaves
- Narrow, flat leaves